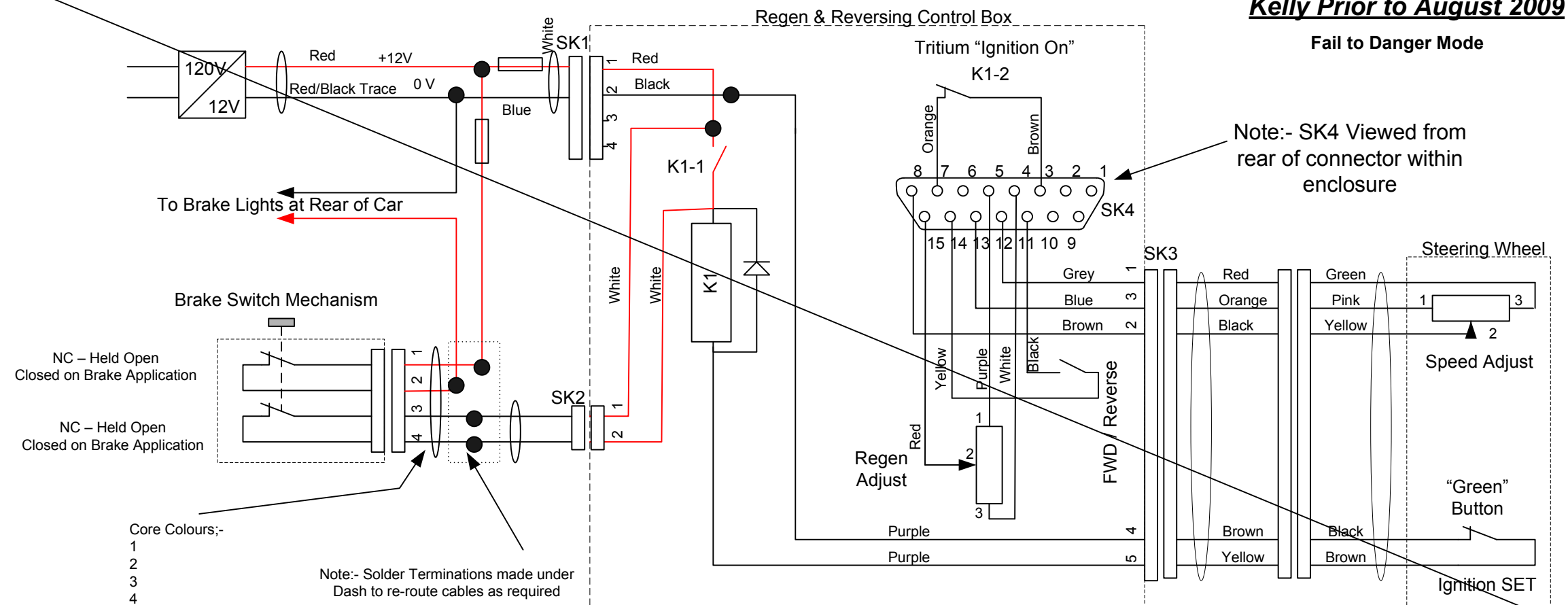


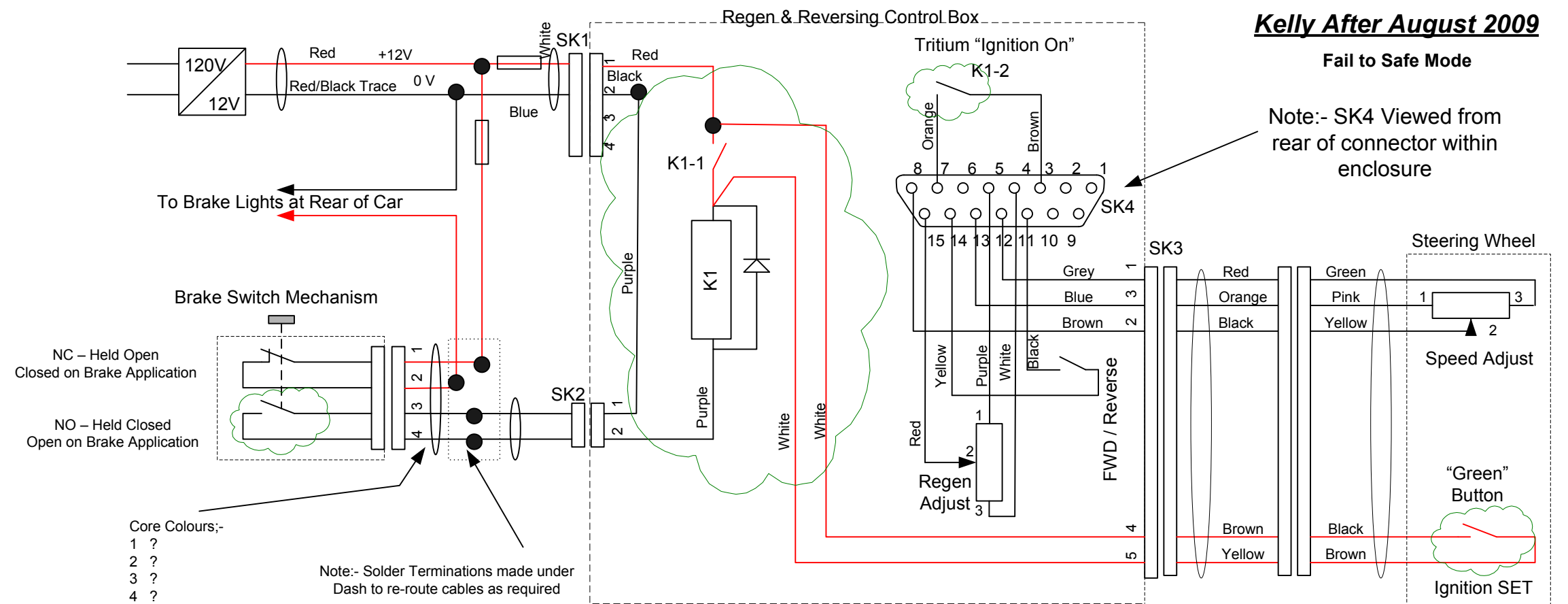
Kelly Prior to August 2009

Fail to Danger Mode



Kelly After August 2009

Fail to Safe Mode



Do Not Use this Drawing for Solar Spirit

Notes:-

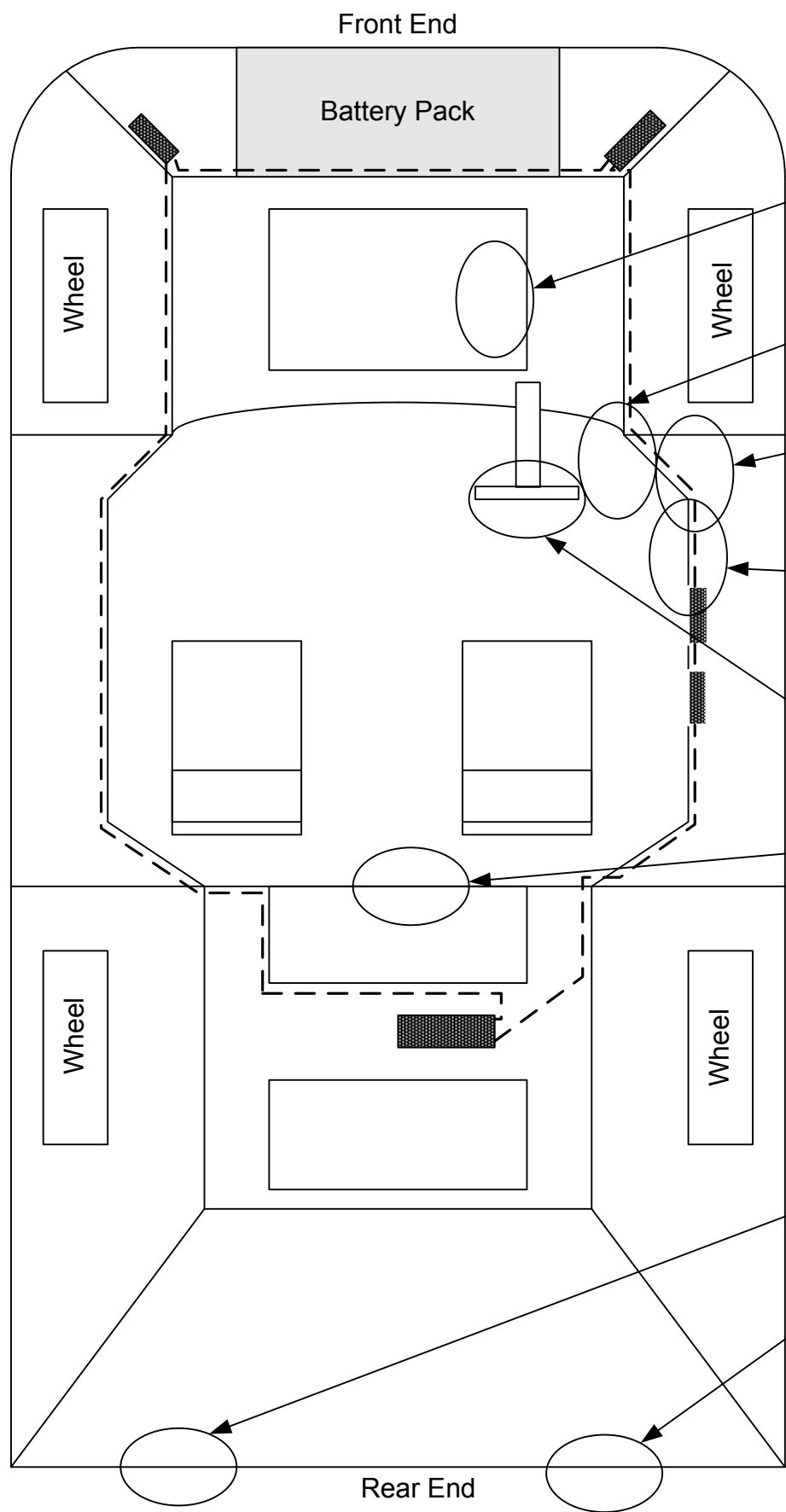
1. This schematic was created during the installation of the Telemetry in August 2009.
2. This schematic should not be considered as complete but should be updated as more is learnt.
3. Drawing not to scale.

Revisions:
A Added Photo 27/8/09
B

"Kelly" – Brake Schematic – As Built

Drawn By Ian Rowley Drawn 26/8/09 Version 1.1 Sht 1 of 2

Kelly Brake Control Schematic Component Layout



Foot Brake Switch

Solder Terminations
Beneath Dash

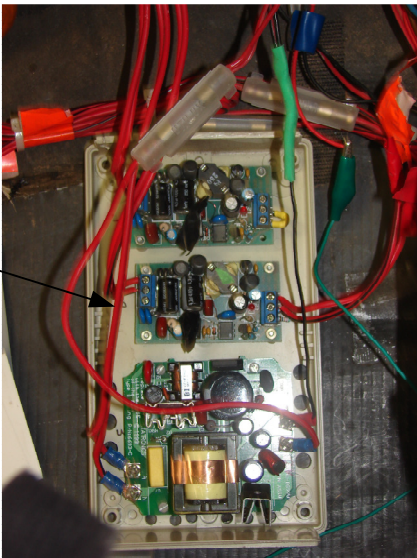
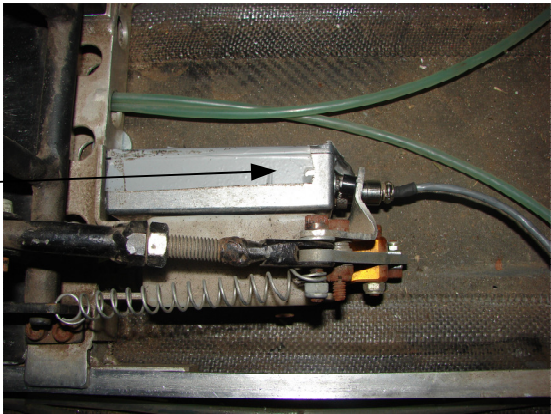
12 Volt DC/DC Converter

Regen and Reversing
Switch Controls

Steering Wheel Controls

Umbilical Cord

Brake Lights (LED Construction)



Note: Kelly not to scale, Diagrammatic representation only.
CAN Nodes in approximate position. Visual location required.

Revisions:
A Added Photos 27/8/09
B

“Kelly” – Brake Electrical Layout – As Built

Drawn By Ian Rowley Drawn 26/8/09 Version 1.1 Sht 2 of 2